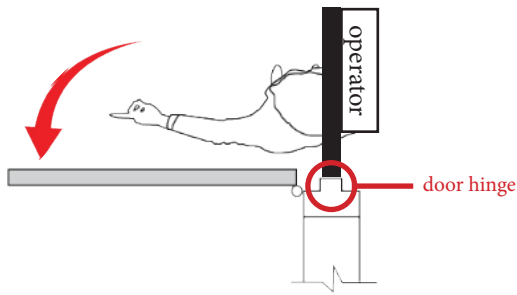
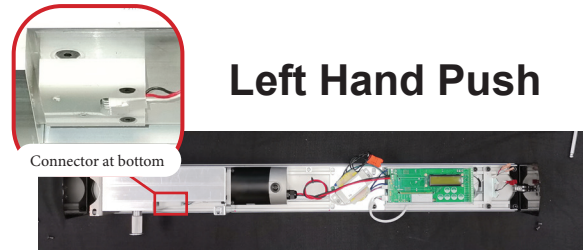


# Birds Eye View Door Operator Direction Manual



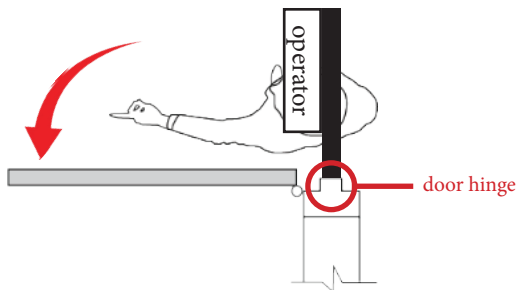
Turn your back to the door hinge side, if:

- door open on your left
- operator and door (opened) are on different sides



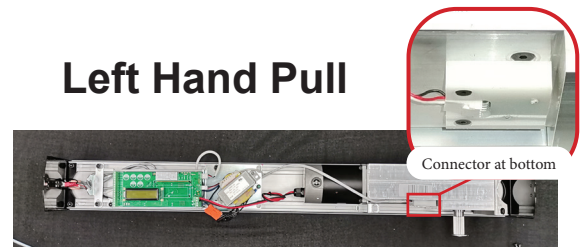
You need left hand push:

- Place the motor on the left
- Motor downwards (connector at bottom)



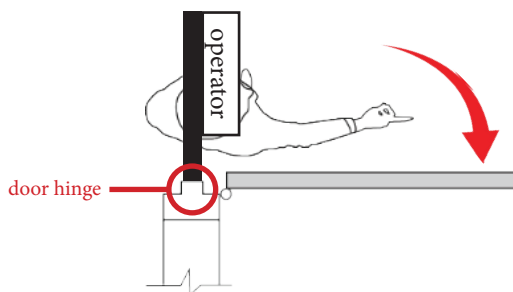
Turn your back to the door hinge side, if:

- door open on your left
- operator and door (opened) are on the same side



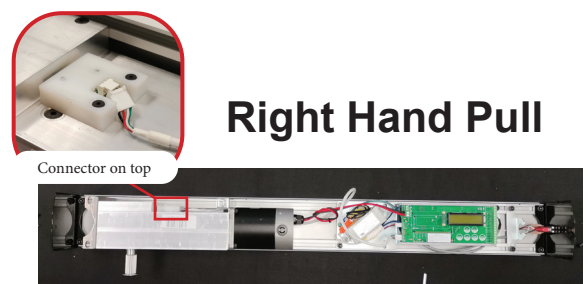
You need left hand pull:

- Place the motor on the right
- Motor downwards (connector at bottom)



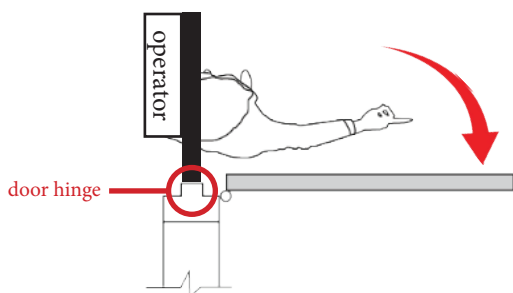
Turn your back to the door hinge side, if:

- door open on your right
- operator and door (opened) are on the same side



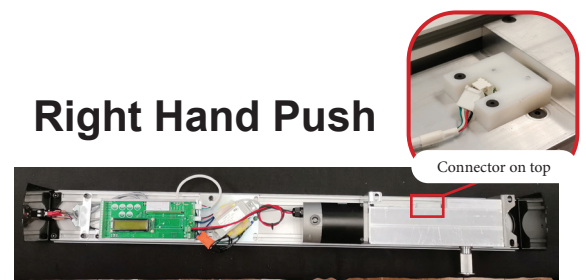
You need right hand pull:

- Place the motor on the left
- Motor facing upwards (connector on top)



Turn your back to the door hinge side, if:

- door open on your right
- operator and door (opened) are on different sides



You need right hand push:

- Place the motor on the right
- Motor facing upwards (connector on top)